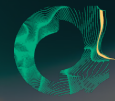


# LLM Case Study

## Multi-Turn Image Conversation Annotator



argos multilingual  
ai — services

### Challenge

Our client (Global Technology Provider) needed an alternative solution to rapidly and accurately annotate 4,000+ images in order to train their multi-modal LLM. Their existing RLHF system had inefficiencies in the workflow, leading to lost metadata, longer timelines and quality issues.

### Solution

Argos Multilingual created the Image Conversation Annotator, a platform that:

- Centralized image management for easier annotation.
- Parsed large datasets quickly, preserving metadata.
- Used guided regular expressions to enforce content guidelines.
- Enabled efficient QA pair creation between prompts and responses.

### Result

- **50%** boost in productivity.
- **98%** fewer quality issues.
- **90%** reduction in project backlog.
- Scalable management of multilingual projects.

Our customized solution allowed the client to address specific challenges with the workflow, optimizing the efficiency, scalability and accuracy of their data operations.